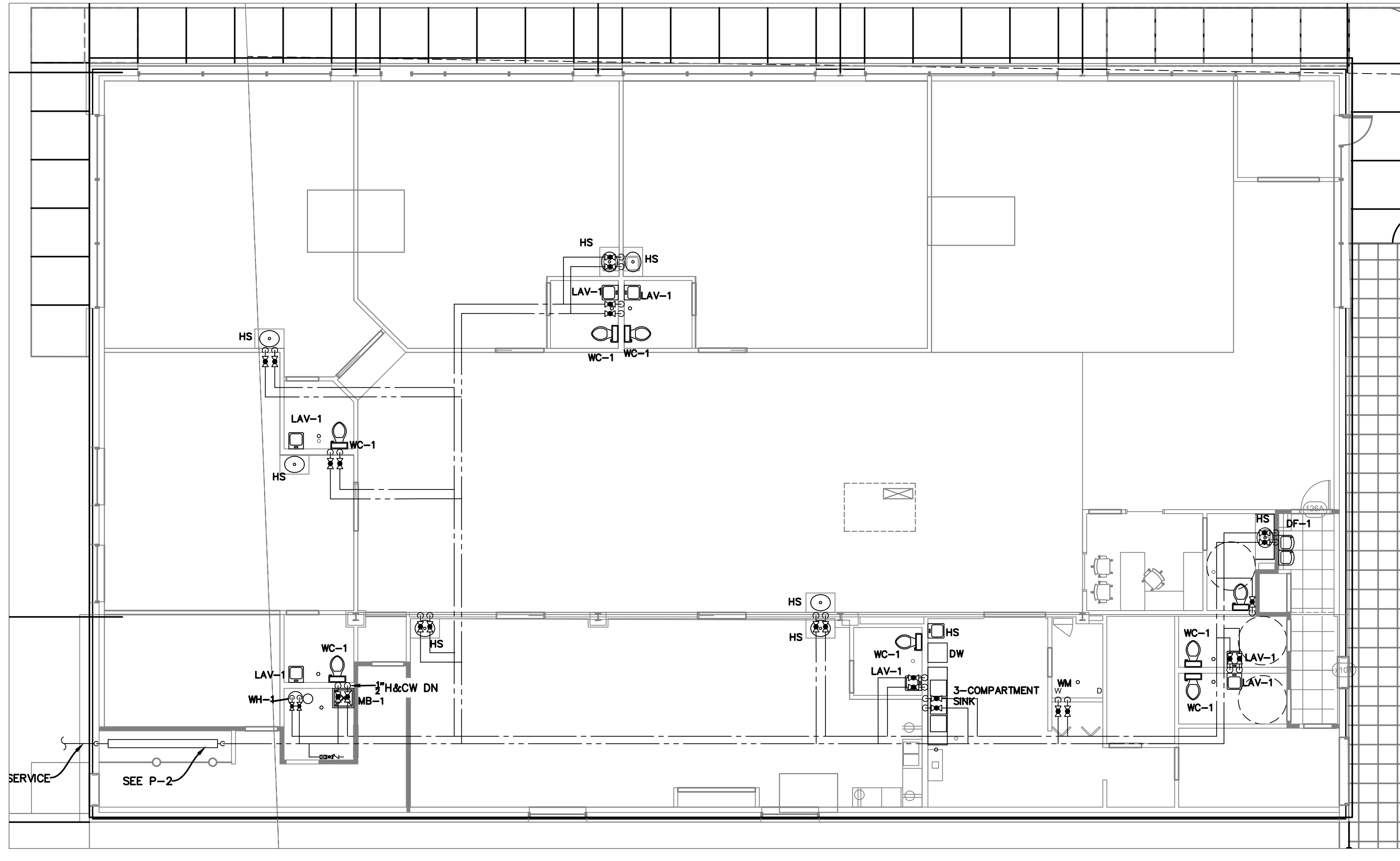


NOTES

1. FURNISH AND INSTALL GREASE INTERCEPTOR FOR FLOOR DRAIN AND 3 COMPARTMENT SINK IN KITCHEN TO DISCHARGE TO SEWER THROUGH GREASE INTERCEPTOR, PER THE ILLINOIS PLUMBING CODE SECTION 880.510.

PLUMBING UG FLOOR PLAN
 SCALE : 1/8" = 1'-0"
 0 8' 16'



PLUMBING ABOVE GROUND FLOOR PLAN
 SCALE : 1/8" = 1'-0"
 0 8' 16'

A+M ARCHITECTS, LLC
 85 Lombard Parkway, Suite 3
 Huntwood, Illinois 60047
 TEL: 847.258.9577

STERLING
 REMEDIATION, INC.
 CONSTRUCTION SERVICES
 430 East IL Route 22 / Half Day Road
 Lake Zurich, Illinois 60047
 847.307.4400 Fax 847.307.4410

CONSULTANTS

INSPIRED
 TECHNOLOGY CONCEPTS, INC.
 MEP DESIGN
 INSPIRED TECHNOLOGY CONCEPTS
 142 CROSSEN AVE.
 ELK GROVE, IL
 TEL: 847-258-5552

STATEMENT OF COMPLIANCE
 Seal

 REGISTERED PROFESSIONAL ENGINEER OF ILLINOIS
 LICENSE EXP. 11-30-19
 1/29/2018

ISSUE FOR	DATE
REVIEW	10/16/17
REVIEW	10/25/17
REVIEW	11/14/17
REVIEW	11/20/17
REVIEW	11/29/17
PERMIT REVIEW	1/29/18

DRAWN BY:
 APPROVED:
 PROJECT NO.
 DATE
 © 2017 A+M Architects

TENANT IMPROVEMENTS FOR:
PIONEER CHILD CARE SERVICES, INC.
 18W375 E. ROOSEVELT RD.
 DUPAGE CTY., ILLINOIS

SHEET DESCRIPTION
 PLUMBING UG
 FLOOR PLAN

SHEET NUMBER
P-1
 SHEET 1 of 3